



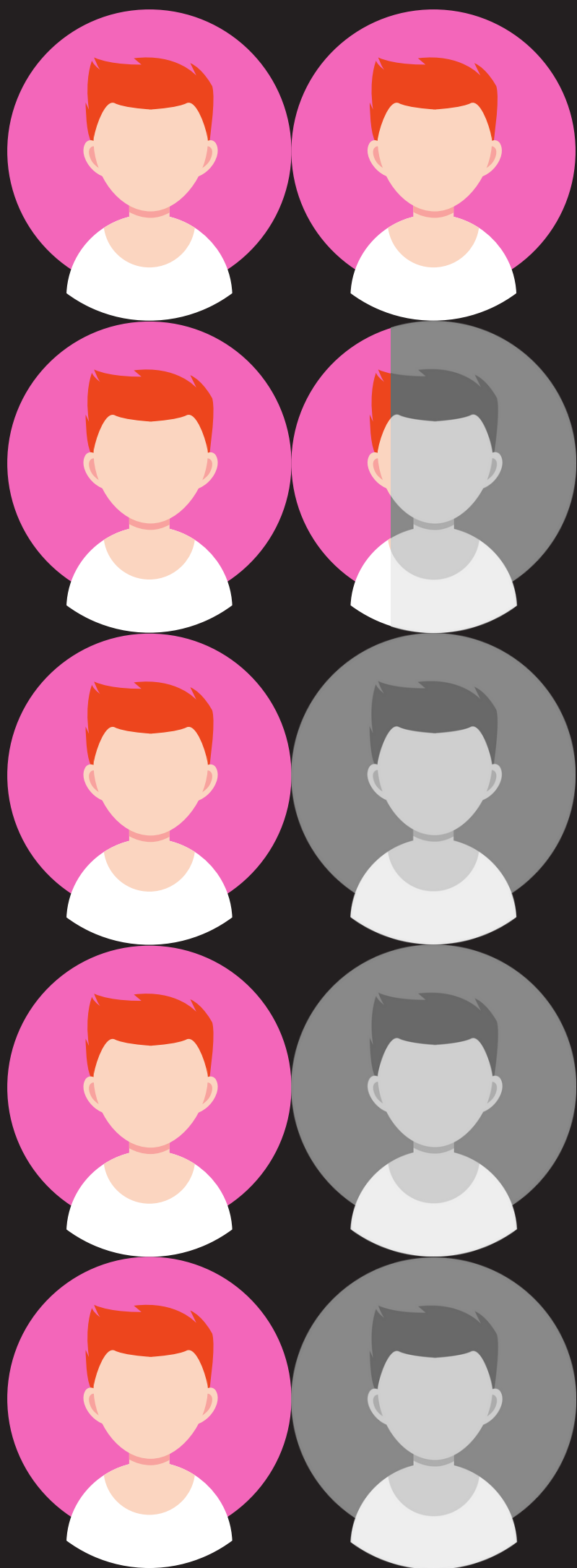
46%

of people who are employed
(or **5.7million** Australian workers)
are living with at least one chronic health condition*.

ABS, National Health Survey, Tablebuilder (2022)

Cultural Value

*Chronic conditions are a subset of long-term health conditions that are common, pose significant health problems, and have been a focus of ongoing public health surveillance e.g. arthritis, diabetes, kidney disease, mental and behavioural conditions.



63%

of people who are
employed
(or 8.5million
Australian
workers) are living
with at least one
long-term health
condition*.

ABS, National Health Survey, Tablebuilder (2022)

Cultural Value

*Long-term health conditions is an overarching category that includes a range of conditions that are expected to last for 6 months or more. It include conditions as diverse as endometriosis, MS, diseases of the eye and ear, CFS/ME, and digestive system disorders.